

## FOR NON-FREEZE APPLICATIONS

The Model 101 is an anti-siphon protected wall faucet designed with the classic Woodford look for irrigation purposes in mild climate areas. The Model 101 utilizes Woodford atmospheric vent and patented check to provide anti-siphon protection. This feature eliminates the need for an add-on vacuum breaker that restricts flow.

### SPECIFICATIONS:

- ASSE Standard 1019-Type C approved
- UPC / IAPMO listed
- Anti-siphon with integral check and atmospheric vent
- Not intended for continuous use



### U.S. Patents:

Listed at:  
<http://www.woodfordmfg.com/Woodford/patents/>

### FEATURES:

- IAPMO Listed
- 3/4" male hose thread nozzle
- EPDM packing with adjustable packing nut
- Standard "O" size seat washer
- No Lead Solder Joints
- Red brass head casting
- Solid brass valve stem
- Powder coated die cast aluminum wheel handle
- Adjustable, polycarbonate wall flange
- Max Pressure: 125 p.s.i.
- Max Temperature: 120° F
- Shipping Weight: 4.5 lbs per carton

**Sold in cartons of 6.**



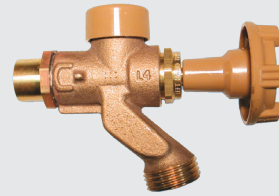
For instructions go to  
[www.woodfordmfg.com](http://www.woodfordmfg.com) or call 1-800-621-6032

WOODFORD

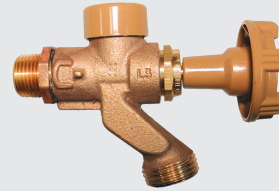


# Anti-Siphon Wall Faucet Model 101

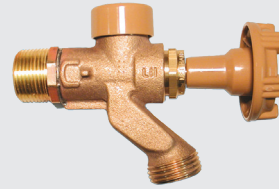
## INLET OPTIONS



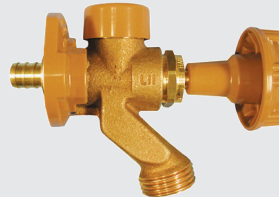
**101C**  
COMBINATION INLET  
Copper Sweat Fitting  
1/2" K, L or M Inside  
3/4" M Only Outside  
*Wall Flange Not Assembled*



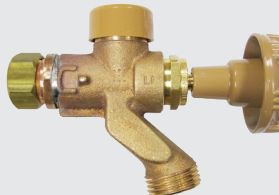
**101CP**  
COMBINATION INLET  
1/2" Male Pipe Thread  
1/2" Female Sweat  
*Wall Flange Not Assembled*



**101P**  
COMBINATION INLET  
3/4" Male Pipe Thread  
1/2" Female Pipe Thread  
*Wall Flange Not Assembled*

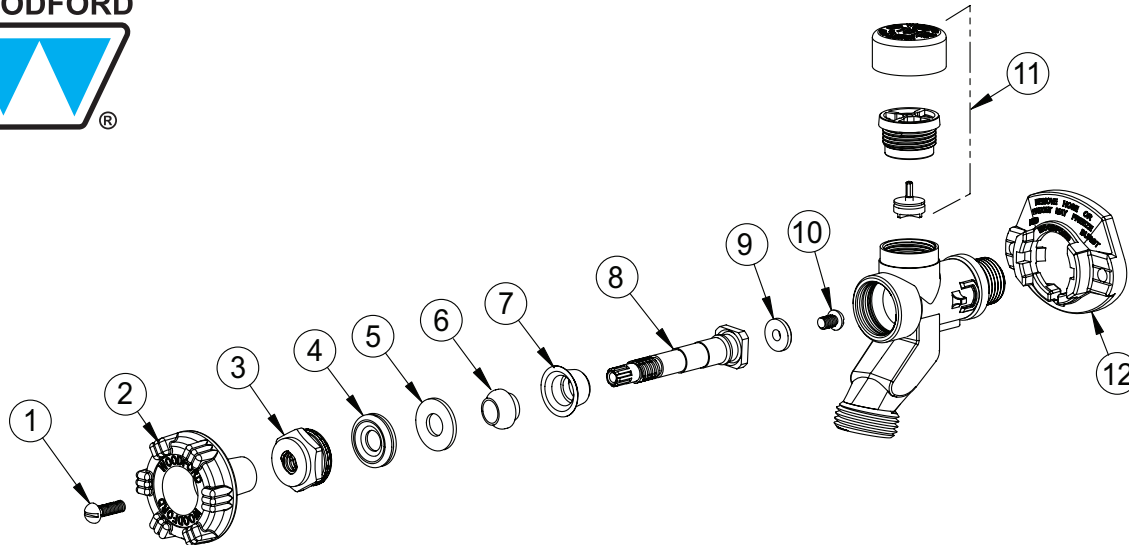


**101PX**  
1/2" PEX Tube Fitting  
*Wall Flange Assembled*

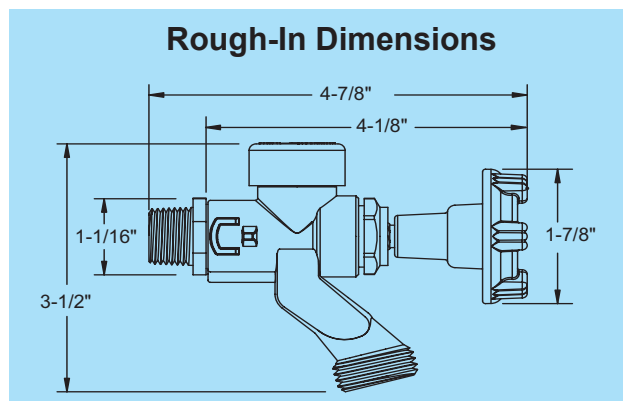


**101CM**  
COMBINATION INLET  
1/2" Compression Fitting  
1/2" Copper Sweat Fitting  
*Wall Flange Not Assembled*

**When ordering, specify model and inlet.**



MODEL 101 PARTS		
ITEM	PART#	DESCRIPTION
1	30002	Handle Screw
2	30096	Wheel Handle (Metal)
3	30570	Packing Nut
4	30247	EPDM Packing
5	30105	Packing Support Washer
6	30824	Anti-Turbulance Sleeve
7	30459	Check Valve
8	30571	Stem Screw
9	30008	Valve Seat Rubber
10	30009	Retainer Screw
11	RK-101VB	Vacuum Breaker Float Kit - Model 101
12	30098	Adjustable Flange
	RK-101	Repair Kit (Includes items 1-7, 9-11)



*For more information contact...*

## WOODFORD MANUFACTURING COMPANY, LLC.

2121 Waynoka Road, Colorado Springs, Colorado 80915 • Phone: (800) 621-6032 • Fax: (800) 765-4115  
 To view our complete product line visit: [www.woodfordmfg.com](http://www.woodfordmfg.com) or email: [sales@woodfordmfg.com](mailto:sales@woodfordmfg.com)