


The Model HC67 & HCB67 are freezeless hot and cold mixer wall hydrants with automatic draining and hose connection Backflow Prevention. Hydrant drains when shut off, *even if hose is attached*. The Model HCB67 is enclosed in a flush mounted wall box. Both models are designed for commercial irrigation purposes where outside Hot & Cold water service is required.

SPECIFICATIONS:

PATENTED HIGH FLOW DOUBLE CHECK BACKFLOW PREVENTER

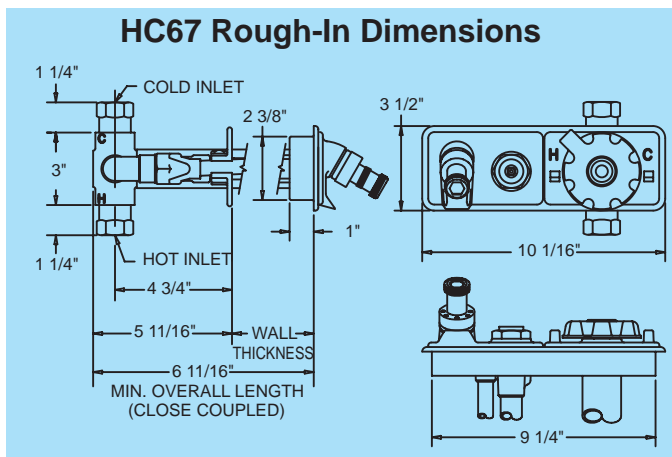
- NIDEL® Model 50HA with ¾ inch male hose thread
- ASSE Standard 1052 approved 
- Field Testable
- Two Independent Check Valves
- Drains automatically when hose is removed
- No spray back

FEATURES:

- Permanent type brass valve body with hemispherical seating surface.
- One piece valve plunger accurately controls both flow and drainage with a minimum number of turns and without need for adjustments.
- Drains under nozzle away from hands of operator and with a lip to divert water away from building.
- Copper casing tubes.
- No Lead Solder on all solder joints.
- Hardened stainless steel stem resists damage.
- Loose key operates hydrant.
- 3/8" solid brass operating rod.
- 3/4" FPT Hot & Cold Inlets
- Check valves are located in each inlet to prevent migration
- Wall clamp furnished on all 60 series except close coupled.
- Max Pressure: 125 p.s.i.
- Max Temperature: 120° F

ACCESS!
DO NOT INSTALL WITHOUT SERVICE ACCESS TO MIXER BODY AND INLETS.

For Troubleshooting Instructions:
<https://www.woodfordmfg.com>
Patented and Patent Pending see
<https://www.woodfordmfg.com/patents>



Freezeless Wall Hydrants Hot & Cold Mixer Automatic Draining



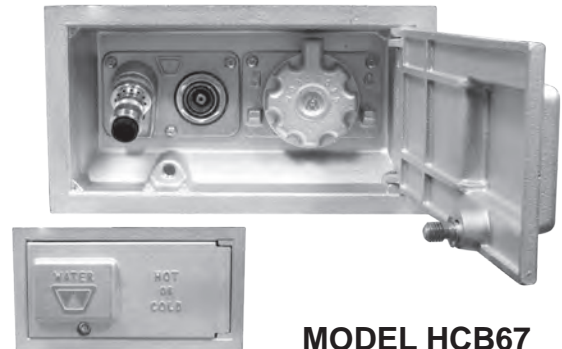
*With Patented Model 50
High Flow Double Check
Backflow Preventer*

Model HC67/HCB67



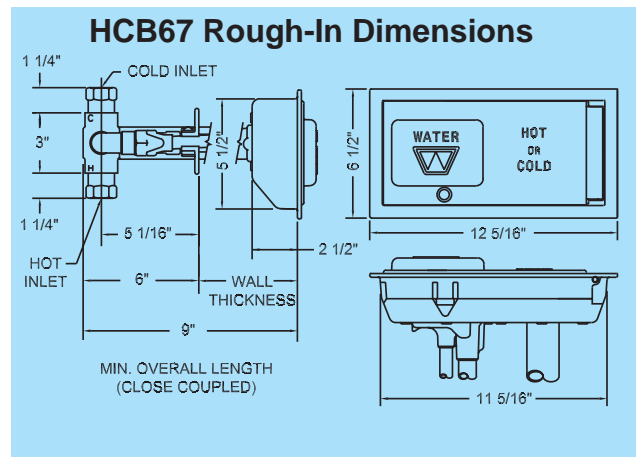
MODEL HC67

Exterior Finish
Standard - Chrome (CH)



MODEL HCB67

Exterior Finish: Box & Door
Standard - Chrome (CH)

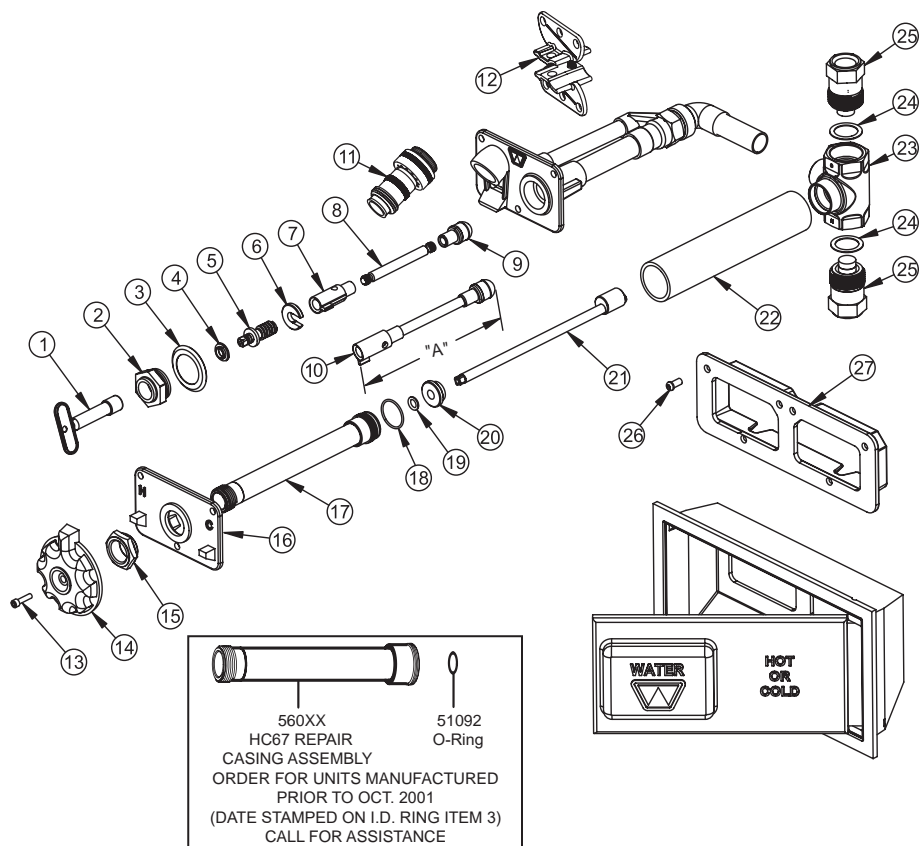


When ordering, specify model number and wall thickness.



Item 10 - Operating Rod Assy. "A"

Wall Thickness		Length	Part No.
67	B67/RB67		
CC	CC	3 1/2"	55401
2	4	4 1/2"	55402
4	6	6 1/2"	55404
6	8	8 1/2"	55406
8	10	10 1/2"	55408
10	12	12 1/2"	55410
12	14	14 1/2"	55412
14	16	16 1/2"	55414
16	18	18 1/2"	55416
18	20	20 1/2"	55418
20	22	22 1/2"	55420
22	24	24 1/2"	55422
24	N/A	26 1/2"	55424



MODEL HC67 PARTS LIST

ITEM	PART#	DESCRIPTION
1	50009	Tee Key
	50010	Long Tee Key (Box Models)
2	50264	Head Nut - chrome
	50265	Head Nut - brass
3	50583	I.D. Ring
4	50252	Stem Washer
5	55062	Stem Screw
6	50251	"C" Washer
7	51014	Yoke Nut
8		Operating Rod (Sold As Item 10 Only)
9	50250	Plunger
10	554XX	Operating Rod Assembly (Includes Items 7, 8 & 9)
11	50HA-CH	NIDEL® 50HA Backflow Preventer - chrome
	50HA-BR	NIDEL® 50HA Backflow Preventer - brass
12	55063	Wall Clamp Assembly
13	50559	Handle Screw
14	50548	Handle - chrome

MODEL HC67 PARTS LIST

ITEM	PART#	DESCRIPTION
15	50545	Locking Nut
16	50544	Face Plate - chrome
17	361XX	HC67 Casing Assembly (Includes Items 18 & 19)**
18	51093	O-Ring AS-023
19	51092	O-Ring AS-110
20	50529	Support Washer
21	5508X	Rod Assembly **
22	5053X	Casing Shield **
23	50500	Mixer Body
24	50502	Gasket (2 required)
25	55079	Shuttle Housing Assembly (2 required)
26	51050	Tamper Proof Screws (6 required)
27	50542	Wall Plate - chrome
	RK-65	Chrome Repair Kit (Includes Items 1-7 & 9)
	RK-HC	HC/HCB Repair Kit (Includes Items 18, 19, 20, 24, 25)

Wall Thickness (In)	CC	4	6	8	10	12	14	16	18	20	22	24
Overall Length* (In)	6 11/16	9 11/16	11 11/16	13 11/16	15 11/16	17 11/16	19 11/16	21 11/16	23 11/16	25 11/16	27 11/16	29 11/16
HC67 Shipping Weight (lbs)	10.8	11.5	12.2	12.9	13.7	14.3	15.1	15.8	16.5	17.3	18.1	18.9
HCB67 Shipping Weight (lbs)	19.3	20.0	20.7	21.4	22.1	22.8	23.5	24.2	24.9	25.6	26.3	27

*Add 5/16" for all box hydrants except CC units add 2 5/16".

**Call for assistance

NOTE: Close Coupled models are not recommended for use in freezing climates and cannot use wall clamp.

For more information contact...

WOODFORD MANUFACTURING COMPANY, LLC

2121 Waynoka Road, Colorado Springs, Colorado 80915 • Phone: (800) 621-6032

To view our complete product line visit: www.woodfordmfg.com or email: sales@woodfordmfg.com