

FOR NON-FREEZE APPLICATIONS

The Model 101 is an anti-siphon protected wall faucet designed with the classic Woodford look for irrigation purposes in mild climate areas. The Model 101 utilizes Woodford atmospheric vent and patented check to provide anti-siphon protection. This feature eliminates the need for an add-on vacuum breaker that restricts flow.

SPECIFICATIONS:

- ASSE Standard 1019-Type C approved
- UPC / IAPMO listed
- Anti-siphon with integral check and atmospheric vent
- Not intended for continuous use



U.S. Patents:

Listed at:
<https://www.woodfordmfg.com/patents/>

FEATURES:

- IAPMO Listed
- 3/4" male hose thread nozzle
- EPDM packing with adjustable packing nut
- Standard "O" size seat washer
- No Lead Solder Joints
- Red brass head casting
- Solid brass valve stem
- Powder coated die cast aluminum wheel handle
- Adjustable, polycarbonate wall flange
- Max Pressure: 125 p.s.i.
- Max Temperature: 120° F
- Shipping Weight: 4.5 lbs per carton

Sold in cartons of 6.



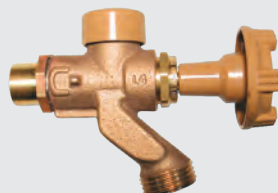
For instructions go to
www.woodfordmfg.com or call 1-800-621-6032

WOODFORD



Anti-Siphon Wall Faucet Model 101

INLET OPTIONS



101C
COMBINATION INLET
Copper Sweat Fitting
1/2" K, L or M Inside
3/4" M Only Outside
Wall Flange Not Assembled



101CP
COMBINATION INLET
1/2" Male Pipe Thread
1/2" Female Sweat
Wall Flange Not Assembled



101P
COMBINATION INLET
3/4" Male Pipe Thread
1/2" Female Pipe Thread
Wall Flange Not Assembled

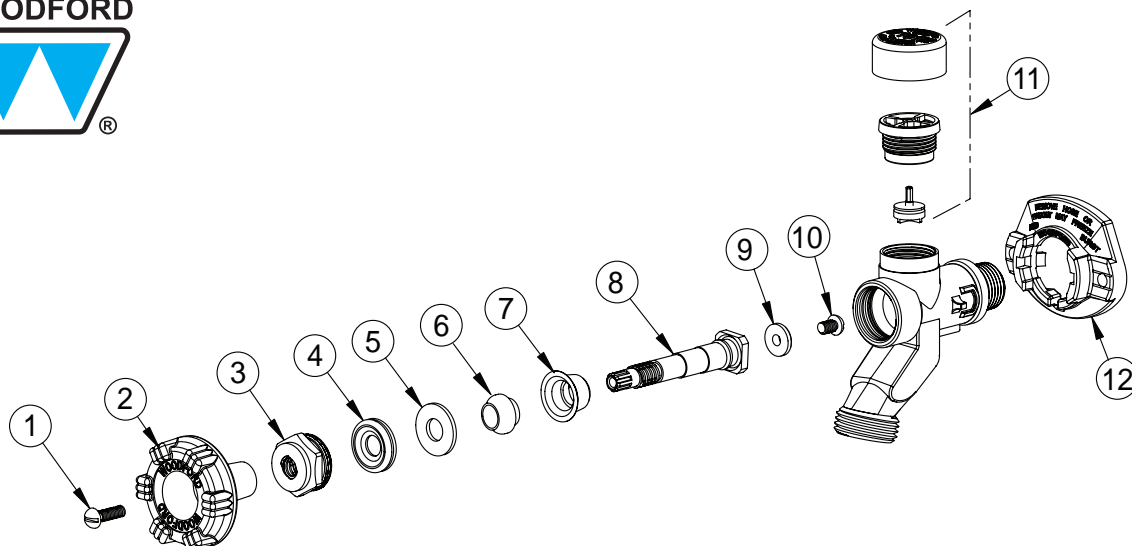


101PX
1/2" PEX Tube Fitting
Wall Flange Assembled



101CM
COMBINATION INLET
1/2" Compression Fitting
1/2" Copper Sweat Fitting
Wall Flange Not Assembled

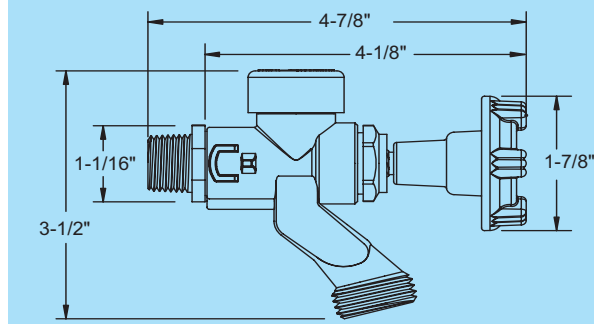
When ordering, specify model and inlet.



MODEL 101 PARTS

ITEM	PART#	DESCRIPTION
1	30002	Handle Screw
2	30096	Wheel Handle (Metal)
3	30570	Packing Nut
4	30247	EPDM Packing
5	30105	Packing Support Washer
6	30828	Anti-Turbulence Sleeve
7	30459	Check Valve
8	30571	Stem Screw
9	30008	Valve Seat Rubber
10	30009	Retainer Screw
11	RK-101VB	Vacuum Breaker Float Kit - Model 101
12	30098	Adjustable Flange
	RK-101	Repair Kit (Includes items 1-7, 9-11)

Rough-In Dimensions



For more information contact...

WOODFORD MANUFACTURING COMPANY

2121 Waynoka Road, Colorado Springs, Colorado 80915 • Phone: (800) 621-6032

To view our complete product line visit: www.woodfordmfg.com or email: sales@woodfordmfg.com