

*This unit offers anti-siphon protection.*

The Woodford Model 25 drains as handle is shut off even if hose is attached. This faucet is designed for outside residential water service applications and intended for irrigation purposes.

#### SPECIFICATIONS:

MODEL 25 - Approved under ASSE Standard 1019-B and listed by IAPMO®. Meets Government Specification WW-541b Type 205.

#### Vacuum Breaker - Anti-Siphon

NIDEL® model 34HA with 3/4" male hose thread. Approved under ASSE Standard 1011. Canadian Standards Association and listed by IAPMO®.

#### FEATURES:

**EXTERIOR FINISH** - Brass

**VALVE** - Molded nitrile suitable for hot water.

**NOZZLE** - 3/4" male hose thread.

**NO LEAD SOLDER** - All solder joints.

**PLUNGER** - Hemispherical cushion type.

**STEM SCREW** - DELRIN®

**HEAD NUT** - Brass

**HANDLE** - Metal. (Optional Tee Key)

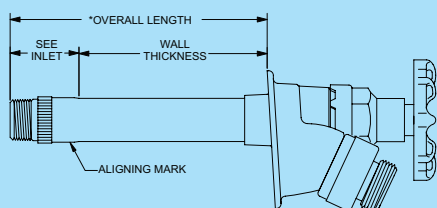
**INLETS** - As shown.

**MAX PRESSURE** - 125 p.s.i.

**MAX TEMPERATURE** - 120° F

**NOTICE** - To close and drain, turn handle clockwise until seated and water drains out of the drain hole or faucet may freeze and burst. Vacuum Breaker replacement is recommended every 3-5 years.

#### Rough-In Dimensions



Wall Thickness (inches)

4	6	8	10	12	14	16	18	20	22	24
2.0	2.1	2.2	2.3	2.4	2.5	2.7	2.9	3.1	3.3	3.5

Shipping Wt. (lbs)

Approx. Shipping Weight Each

\*Overall Length Dimension: Add wall thickness and inlet option length shown in chart at right.

Patent informaion available at :

<http://www.woodfordmfg.com/Woodford/patents/>

For Installation / Troubleshooting Instructions go to:

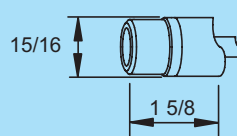
[www.woodfordmfg.com](http://www.woodfordmfg.com) or call 1-800-621-6032



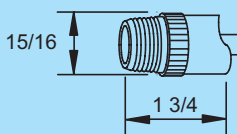
## Anti-Siphon Automatic Draining Freezeless Wall Faucet Model 25



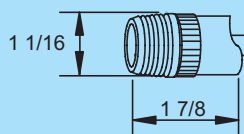
#### Inlet Descriptions



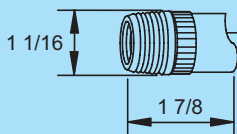
**C Inlet**  
COMBINATION  
Copper Sweat Fitting  
1/2" K, L or M Inside  
3/4" M Only Outside



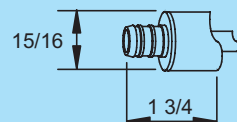
**CP Inlet**  
COMBINATION  
1/2" Male Pipe Thread  
1/2" Female Sweat



**CP3 Inlet**  
COMBINATION  
3/4" Male Pipe Thread  
3/4" Female Sweat

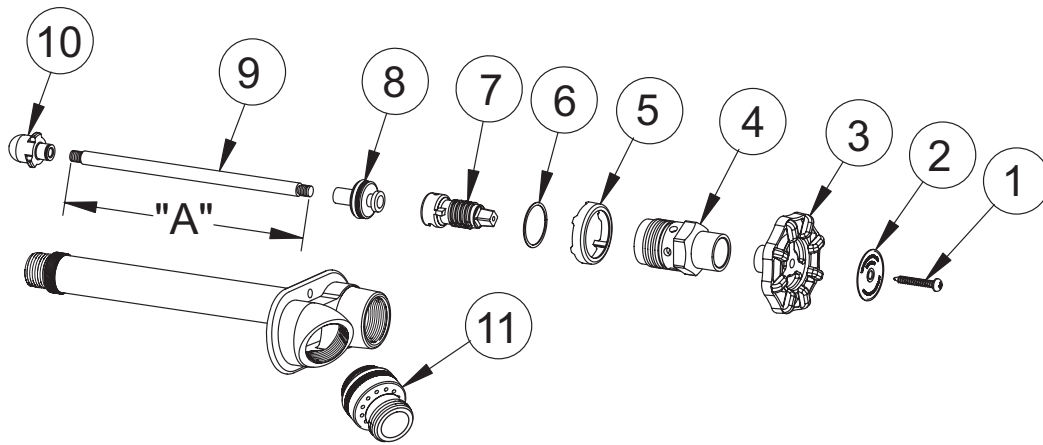


**P Inlet**  
COMBINATION  
1/2" Female Pipe Thread  
3/4" Male Pipe Thread



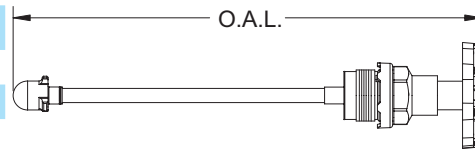
**PX Inlet**  
1/2" PEX Tube Fitting  
**PX3 INLET**  
3/4" PEX Tube Fitting

*When ordering, specify model , inlet and wall thickness.*



### MODEL 25 PARTS LIST

ITEM	PART#	DESCRIPTION
1	30234	Handle Screw
2	30438	I.D. Ring - Model 25
3	30239	Wheel Handle - Metal
4	30241	Head Nut - Brass
5	30236	Drain Guard
6	30245	Head Nut Gasket
7	30238	Stem Screw
8	35280	Drain Valve Assembly
9	303XX	Operating Rod (See Chart)
10	30230	Plunger Assembly
11	34HA-BR	34HA Vacuum Breaker - brass
	RK-25	Repair Kit (Includes items 1, 3-8 & 10)
	RK-27	Repair Kit (Includes items 1, 3-8, 10 & 50HA-BR)



### OPERATING ROD ASSEMBLY INCLUDES ITEMS 1 THRU 10

Wall Thickness	Overall Length	Part No.
CC	5"	35501
4	8"	35504
6	10"	35506
8	12"	35508
10	14"	35510
12	16"	35512
14	18"	35514
16	20"	35516
18	22"	35518
20	24"	35520
22	26"	35522
24	28"	35524

### OPERATING ROD DIM "A"

Wall Thickness	Length	Part No.
4	4-7/16"	30304
6	6-7/16"	30306
8	8-7/16"	30308
10	10-7/16"	30310
12	12-7/16"	30312
14	14-7/16"	30314
16	16-7/16"	30316
18	18-7/16"	30318
20	20-7/16"	30320
22	22-7/16"	30322
24	24-7/16"	30324



For more information contact...

## WOODFORD MANUFACTURING COMPANY

2121 Waynoka Road, Colorado Springs, Colorado 80915 • Phone: (800) 621-6032

To view our complete product line visit: [www.woodfordmfg.com](http://www.woodfordmfg.com) or email: [sales@woodfordmfg.com](mailto:sales@woodfordmfg.com)