



# Anti-Siphon Wall Faucets Model V26

The Model V26 is an anti-siphon, vacuum breaker protected wall faucet designed for irrigation purposes in mild climate areas. The Model V26 is designed to be mounted directly to a wall or column with a top mount inlet. Designed to blend with modern architecture for installation on or in service stations, custodial services, churches, motels, restaurants, etc.

## SPECIFICATIONS:

### VACUUM BREAKER - ANTI-SIPHON:

- NIDEL® Model 50HF with 3/4 inch male hose thread
- ASSE Standard 1052 approved
- IAPMO® listed



**EPDM PACKING:** Prevents leaking.

**PACKING NUT:** Adjustable brass nut with deep stem guard.

**VALVE SEAT:** Standard "O" size washer.

**HANDLES:** Furnished with tan plastic wheel handle and loose tee key.

**INLET:** 1/2 FPT.

**MAX PRESSURE:** 125 p.s.i.

**MAX TEMPERATURE:** 120° F

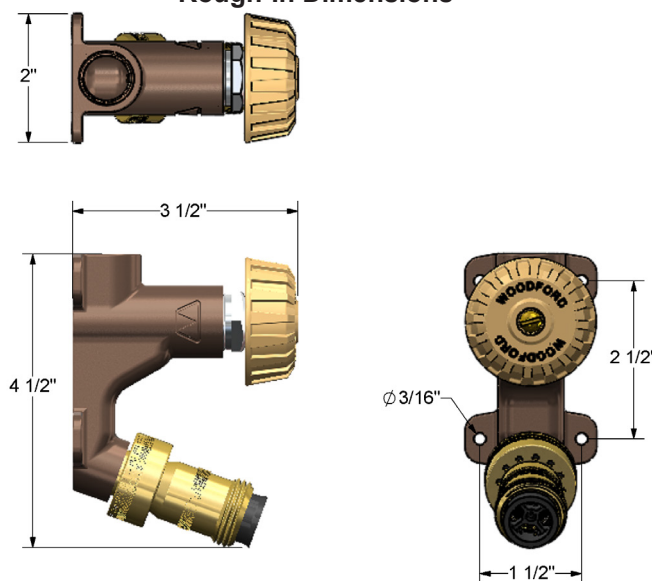
**SHIPPING WEIGHT:** (per unit): 1.4 lb

**EXTERIOR FINISH:** Rough Brass (BR) or Chrome (CH)



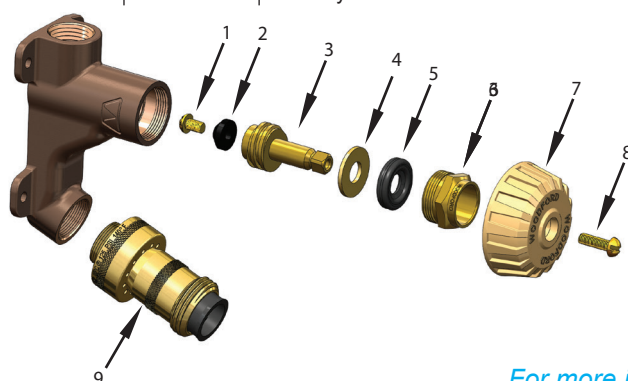
Chrome (CH)  
Inlet Description  
Top Inlet 1/2" FPT

### Rough-In Dimensions



## MODEL V26 PARTS LIST

ITEM	PART#	DESCRIPTION
1	30009	Washer Screw
2	30008	Washer
3	30104	Operating Stem
4	30105	Packing Support Washer
5	30247	EPDM Packing
6	30109	Packing Nut - Chrome
	30107	Packing Nut - Brass
7	30120	Wheel Handle - Clear
	30233	Wheel Handle - Tan
8	30121	Handle Screw - Nickel
	30002	Handle Screw - Brass
9	50HF-CH	50HF Vacuum Breaker - Chrome
	50HF-BR	50HF Vacuum Breaker - Brass
	50009	Tee Key



For Installation / Troubleshooting Instructions go to  
<https://www.woodfordmfg.com>  
 Patent Information is available at:  
<https://www.Woodfordmfg.com/patents/>  
 or call 1-800-621-6032

For more information contact...

## WOODFORD MANUFACTURING COMPANY, LLC.

2121 Waynoka Road, Colorado Springs, Colorado 80915 • Phone: (800) 621-6032 • Fax: (800) 765-4115

To view our complete product line visit: [www.woodfordmfg.com/Woodford/](http://www.woodfordmfg.com/Woodford/)