

FOR NON-FREEZING AREAS

The Model 21 Wall Faucet is designed for irrigation purposes to be used indoors or outdoors in mild climate areas on homes, service stations, churches, motels, drive-in restaurants, etc.

THIS UNIT OFFERS NO ANTI-SIPHON PROTECTION

SPECIFICATIONS:

EXTERIOR FINISH - Chrome (CH) Standard
Optional: Rough Brass (BR) or Polished Chrome (PC)

PACKING - EPDM

PACKING NUT - Adjustable brass nut with deep stem guard

VALVE SEAT - Standard "O" size washer

HANDLES - Standard polycarbonate wheel handle and loose tee key.
Optional: Metal wheel handle only.

MAX PRESSURE: 125 p.s.i.

MAX TEMPERATURE: 120° F

SHIPPING WEIGHT (per unit): 1 lb

TAMPER-PROOF LOCK SHIELD

Patent information:

<https://www.woodfordmfg.com/Woodford/patents/>

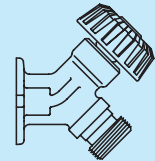
*For instructions go to
www.woodfordmfg.com or call 1-800-621-6032*

Wall Faucet Model 21

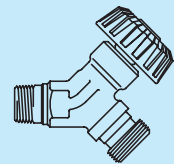


Inlet Descriptions

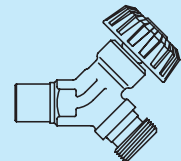
P-1/2 Inlet
1/2" FPT
P-3/4 Inlet
3/4" FPT



CP Inlet
COMBINATION
1/2" COPPER TUBE
1/2" MPT



C Inlet
COMBINATION
1/2" COPPER TUBE
3/4" COPPER TUBE



When ordering, specify model, inlet and finish



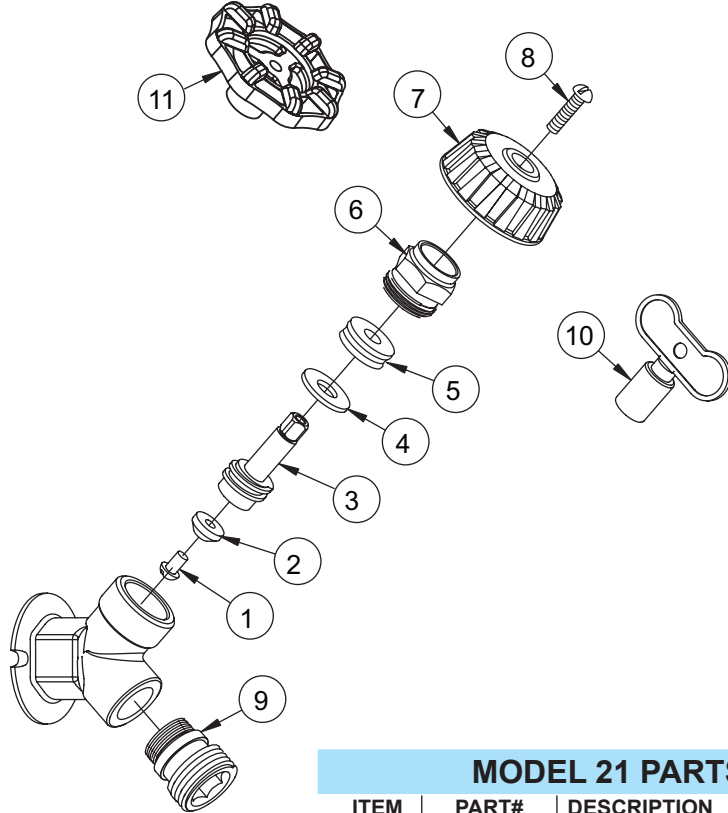
For more information contact...

WOODFORD MANUFACTURING COMPANY

2121 Waynoka Road, Colorado Springs, Colorado 80915 • Phone: (800) 621-6032 • Fax: (800) 765-4115

To view our complete product line visit: www.woodfordmfg.com or email: sales@woodfordmfg.com

A Division Of WCM Industries, Inc.



MODEL 21 PARTS LIST

ITEM	PART#	DESCRIPTION
1	30009	Washer Screw
2	30008	Washer
3	30104	Operating Stem
4	30105	Packing Support Washer
5	30247	EPDM Packing
6	30109	Packing Nut - Chrome
	30107	Packing Nut - Brass
7	30120	Wheel Handle - Clear polycarbonate
	30233	Wheel Handle - Tan polycarbonate
8	30121	Handle Screw - Nickel
	30002	Handle Screw - Brass
9	55437	Hose Nozzle w/O-Ring - Chrome
	55435	Hose Nozzle w/O-Ring - Brass
10	50009	Tee Key
11	30106	Wheel handle - Metal (unpainted)
	30239	Wheel Handle - Metal (painted)
	RK-24	Chrome Repair Kit (Includes items 1-8) (Chrome packing nut and clear handle)
	RK-H34	Brass Repair Kit (Includes items 1-8) (Brass packing nut and tan handle)

For more information contact...

WOODFORD MANUFACTURING COMPANY

2121 Waynoka Road, Colorado Springs, Colorado 80915 • Phone: (800) 621-6032 • Fax: (800) 765-4115

To view our complete product line visit: www.woodfordmfg.com or email: sales@woodfordmfg.com

A Division Of WCM Industries, Inc.